

**Configuring Print Set Up
For Booklet Finishing**

**A4 Booklet
&
A5 Booklet**

Drivers:

PCL5

PCL6 / Post Script

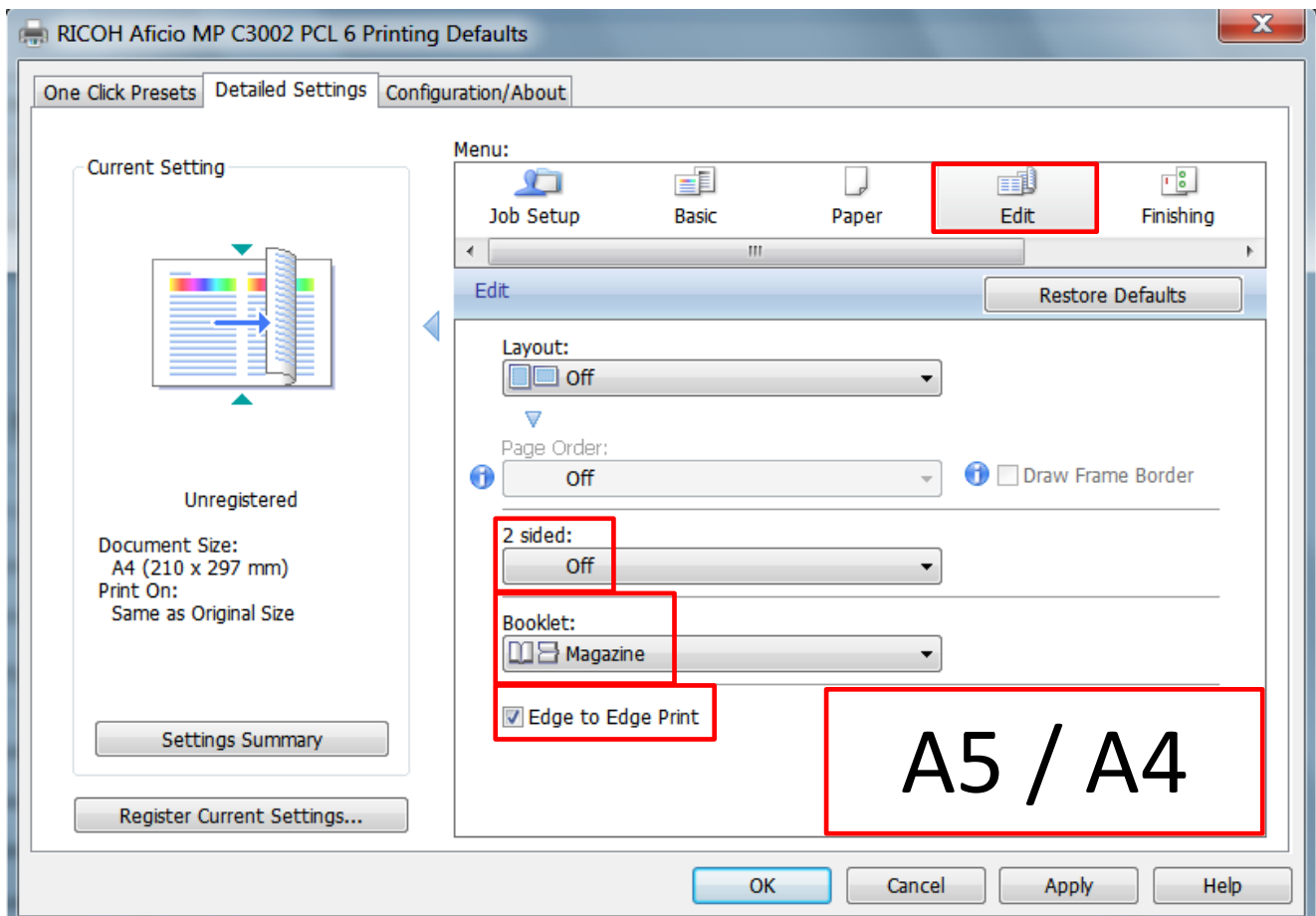
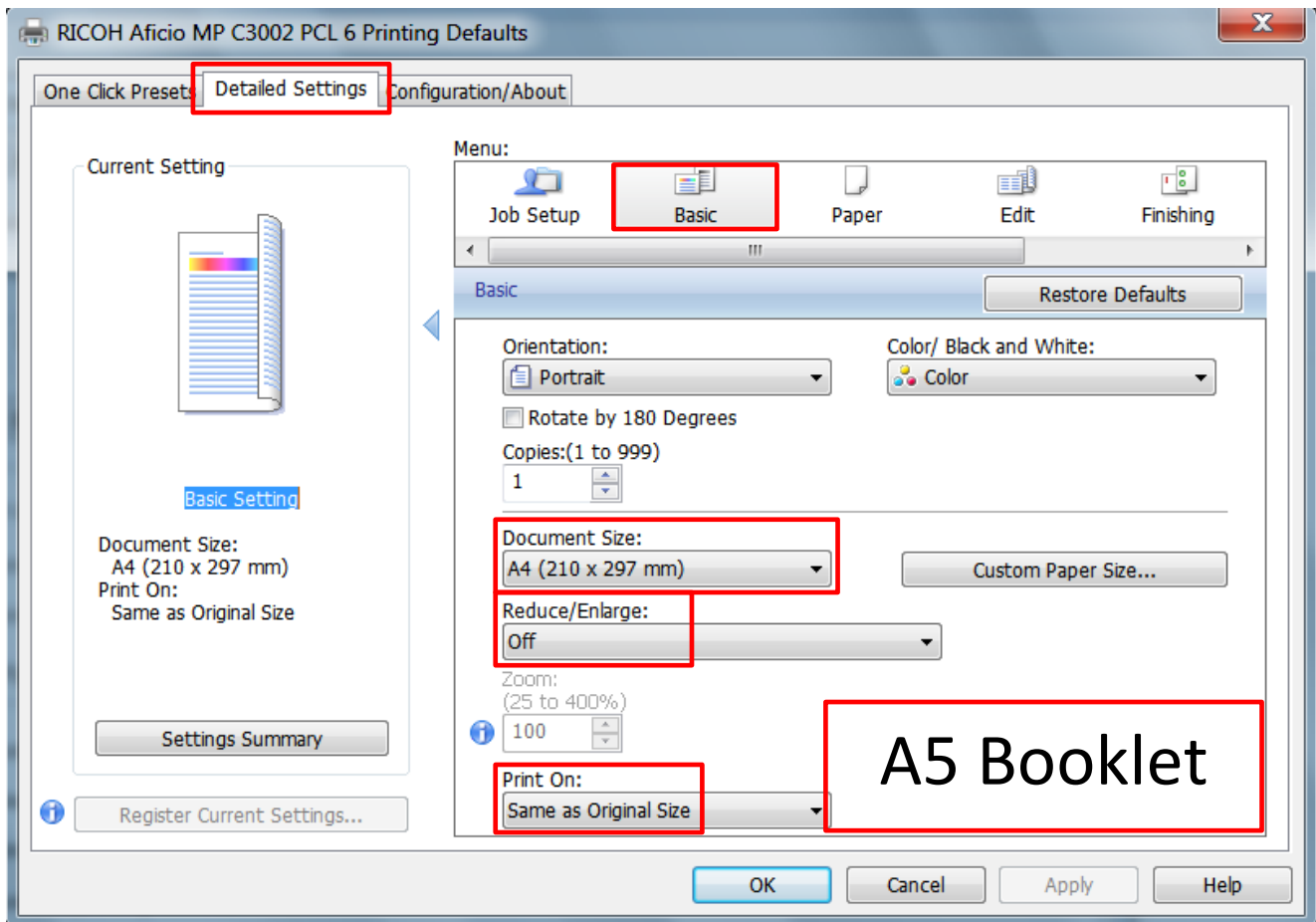
To produce a 'A4' size booklet

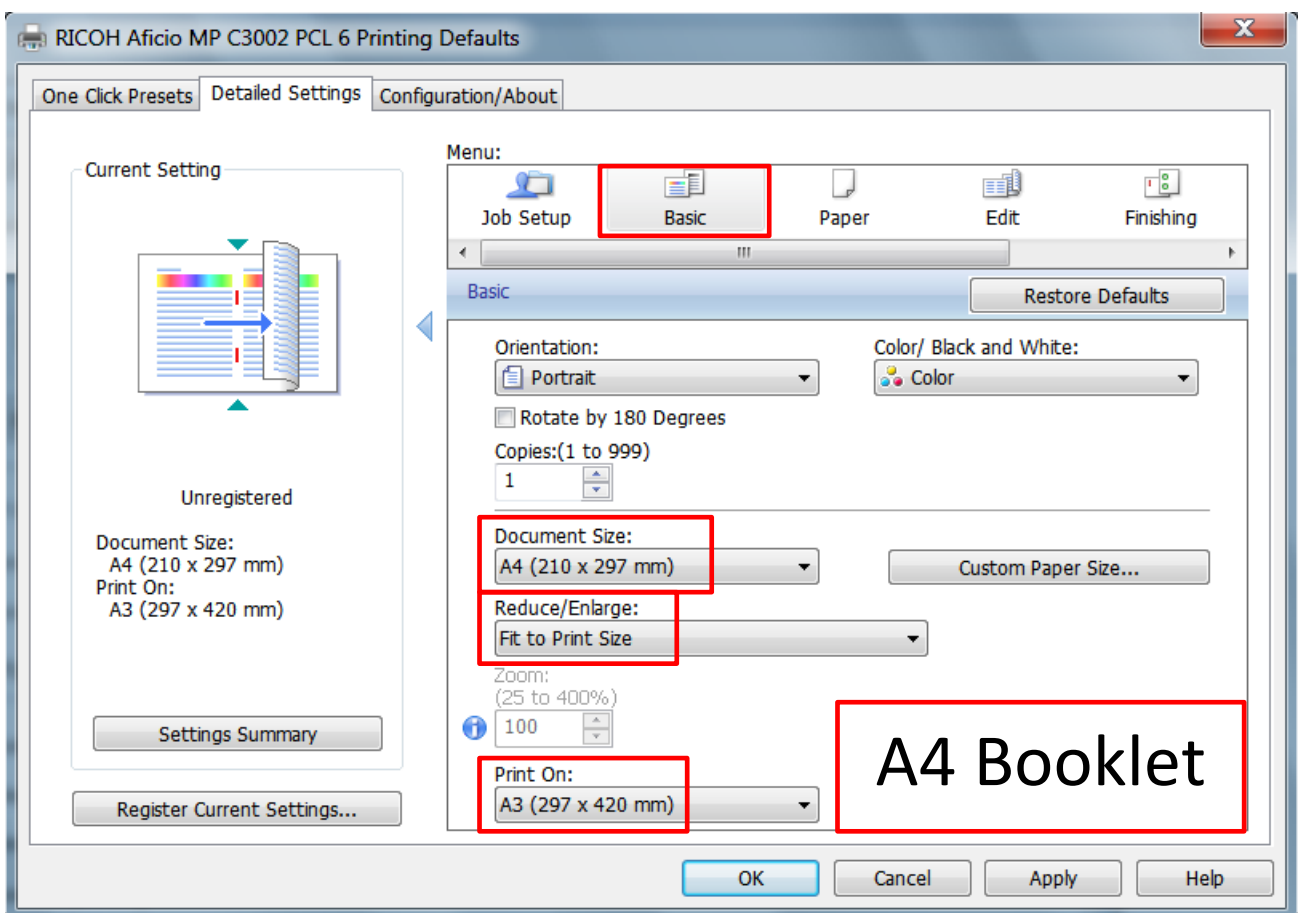
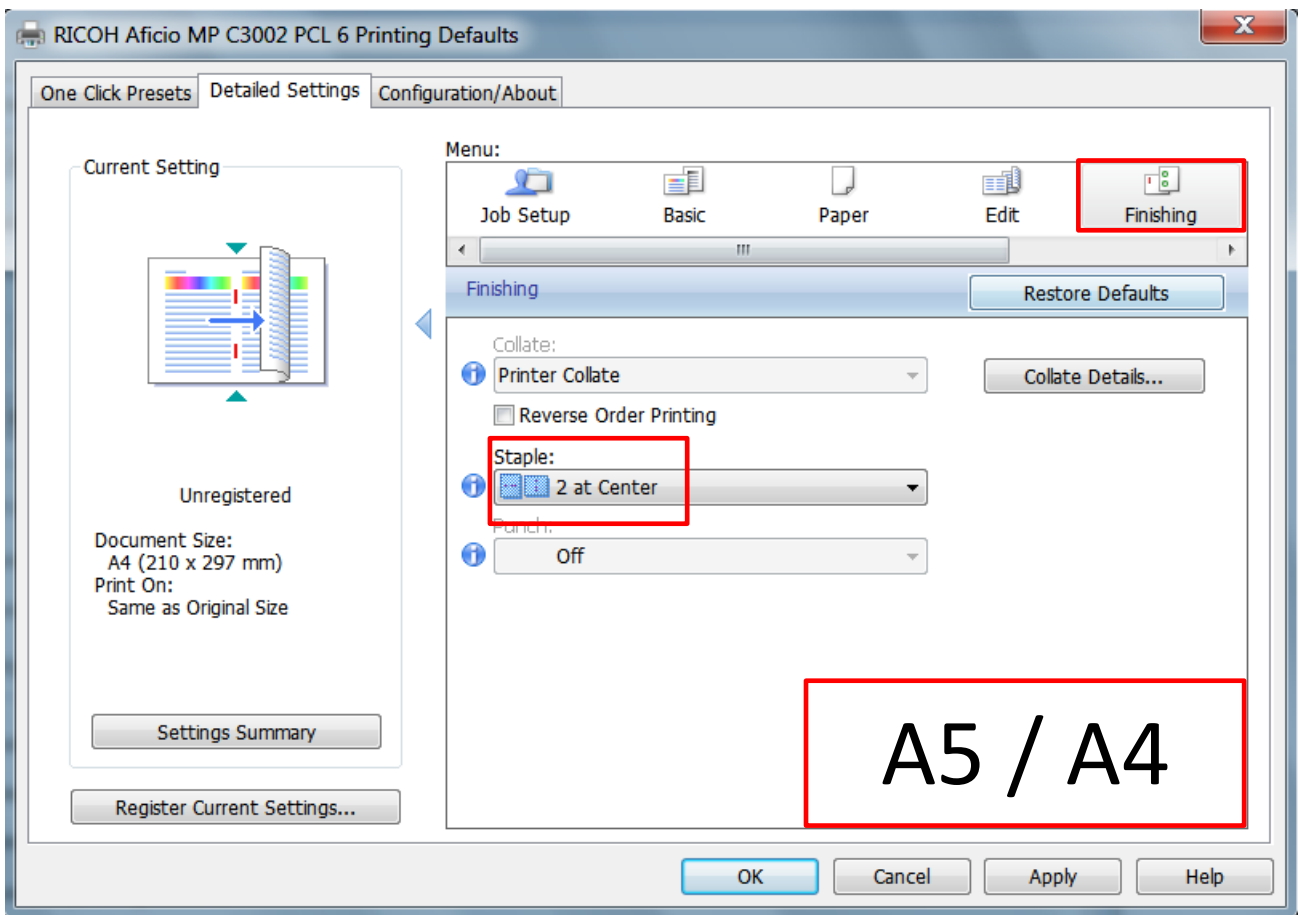
*The Copier must have 'A3' size paper
in one of the paper trays*

To produce a 'A5' size booklet

*The Copier must have 'A4R' size paper
in one of the paper trays*

PCL 6 / Post Script DRIVER BOOKLET CONFIGURATION





PCL 5 DRIVER BOOKLET CONFIGURATION

